



WILWESTWOODLEBER

**WILWESTWOODLEBER**  
LET US GUIDE YOU HOME

Westfield Road, Hoddesdon, EN11 8RA  
£435,000



## Westfield Road, Hoddesdon, EN11 8RA

Westwood Leber are delighted to bring to the market this well-presented three-bedroom mid-terrace family home, ideally situated within a popular residential location on Westfield Road, Hoddesdon.

Offering spacious and well-balanced accommodation throughout, the property comprises a welcoming entrance porch leading into a generous living room, creating an excellent space for relaxing and entertaining. To the rear, the impressive kitchen/dining room provides ample storage and worktop space with plenty of room for family dining, while the adjoining conservatory offers additional living space overlooking the rear garden.

The first floor benefits from three well-proportioned bedrooms, including two generous doubles and a good-sized single, all served by a modern family bathroom. The spacious second bedroom comfortably accommodates a king-size bed with wardrobes positioned along one wall, highlighting the excellent proportions on offer. The principal bedroom also benefits from a fitted shower, offering added convenience and flexibility.

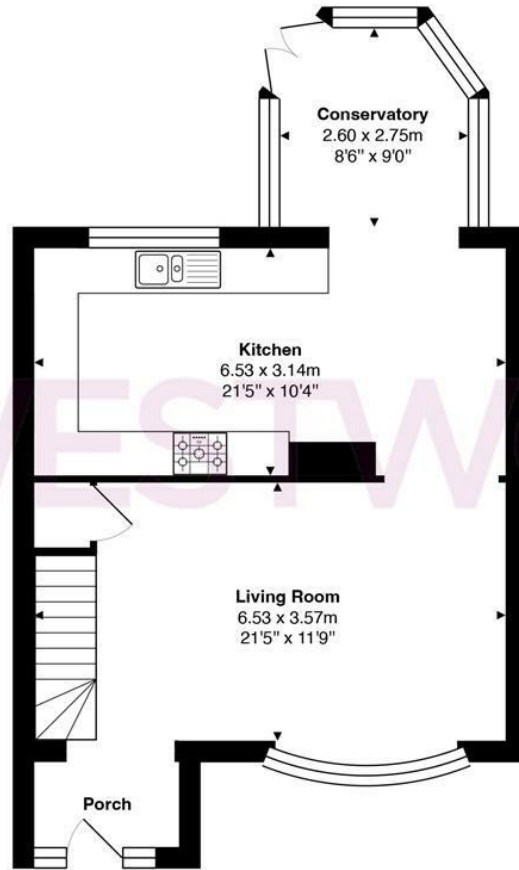
Externally, the property enjoys a private rear garden and benefits from a driveway providing off-street parking.

Conveniently located, the property is within easy reach of Rye House Railway Station, providing regular services into London Liverpool Street, making it an excellent choice for commuters. Hoddesdon town centre is also close by, offering a wide range of shops, cafés, restaurants and everyday amenities, together with

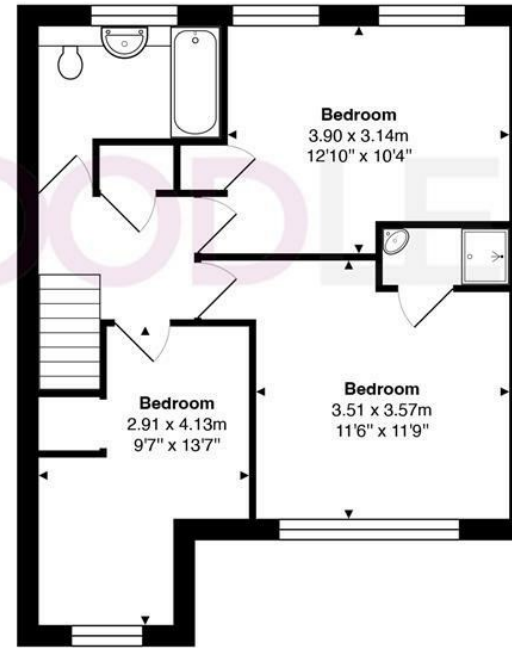


**W WESTWOODLEBER**

**W WESTWOODLEBER**  
LET US GUIDE YOU HOME



**Ground Floor**



**First Floor**

Total Area: approx. 102.4 m<sup>2</sup> ... 1102 ft<sup>2</sup>

THE FLOORPLAN IS FOR ILLUSTRATIVE PURPOSES ONLY AND IS NOT TO SCALE.  
 Measurements and features are approximate and may differ from the actual property. Verify all details independently; no liability is accepted for errors or omissions.

Property marketing provided by [www.fotomarketing.co.uk](http://www.fotomarketing.co.uk)





WESTWOODLEBER



WESTWOODLEBER



WESTWOODLEBER



WESTWOODLEBER





